

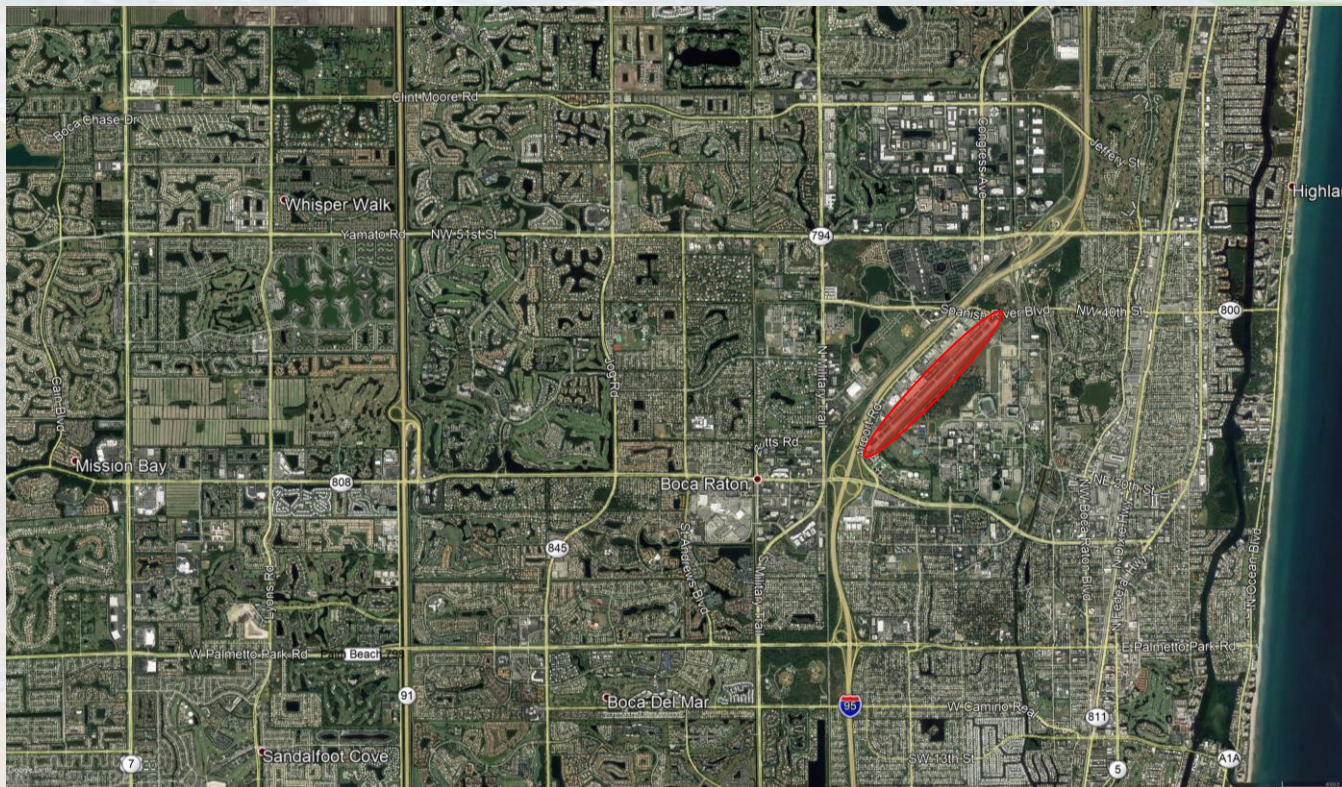


Airport Noise

Aircraft Noise

- When moving to a new area, it is important to understand the implications of air traffic.
- What is annoying to one person, may not bother someone else.
- It is important to visit your potential home to see if the aircraft activity is compatible with your way of life.

Boca Raton Airport



Boca Raton Airport

The Boca Raton Airport is located east of I-95 between Glades RD and Spanish River BLVD

- One runway: 5/23
 - 6,276' long by 150' wide
- Air Traffic control Tower
 - Open from 7:00 AM – 11:00 PM
- U.S. Customs and Border Protection Facility

Operations

- Over 70,000 aircraft operations in 2017.
- Winter months are much busier than summer months.
- The Boca Raton Airport is a public facility.
 - Aircraft can operate at the airport 24 hours a day.
 - Voluntary Curfew from 10:00 PM to 7:00 AM

Aircraft Size

- The Boca Raton Airport is a public General Aviation facility.
- No commercial airlines operate at the airport.
- Sizes range from small single engine propeller planes, to large corporate jets weighing up to 90,000 pounds with wingspans of 100 feet.

What Causes Airport Noise?

- Low flying aircraft can be noisy.
- Low flying aircraft near an airport are inevitable.
- Certain areas will see more low flying aircraft than other however.
- Different phases of flight produce different noise problems.
- The two phases of flight that are most bothersome are take-offs and landings.

Take-Offs

- The ability to climb faster, and get to gain altitude before leaving airport property.
 - Higher aircraft are less noisy.
- More flexibility with direction of flight after take-off.
 - The ability to follow suggested noise abatement departure headings.
- Noisiest phase of flight.
 - High engine power during take-off produces the loudest noise of any other phase.

Landings

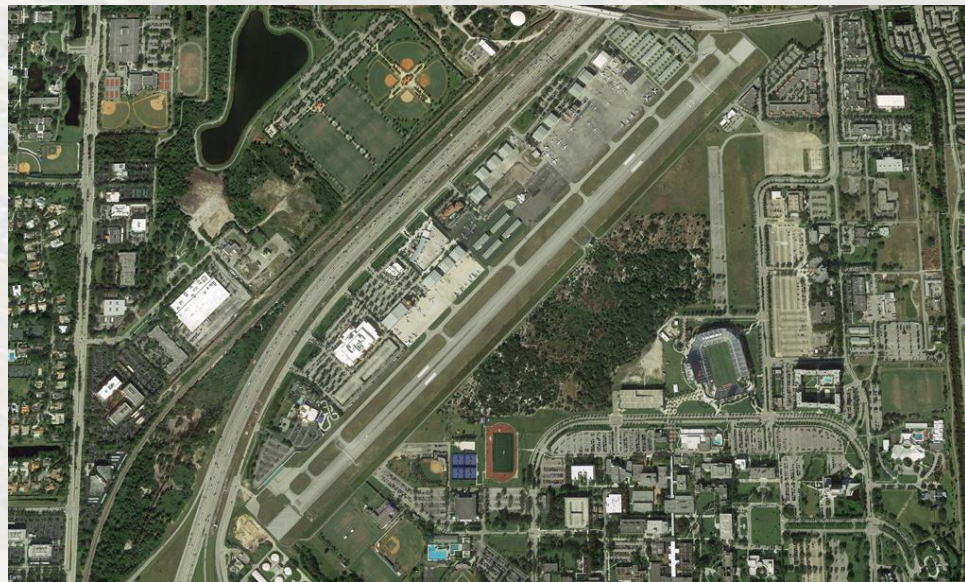
- Much lower power than take-offs.
 - This means aircraft are landing quatter than they are taking off.
- Much less flexibility with direction of flight during landing.
 - Higher concentration of air traffic as aircraft align themselves with the runway.
 - This can extend out for several miles.
- Aircraft are usually lower for a longer period of time.

Who determines the direction of aircraft take-offs and landings?

The Runway

- The Boca Raton Airport has one runway.
 - This runway can be used in either direction.
- The runway layout plays an important role in the flow of air traffic.

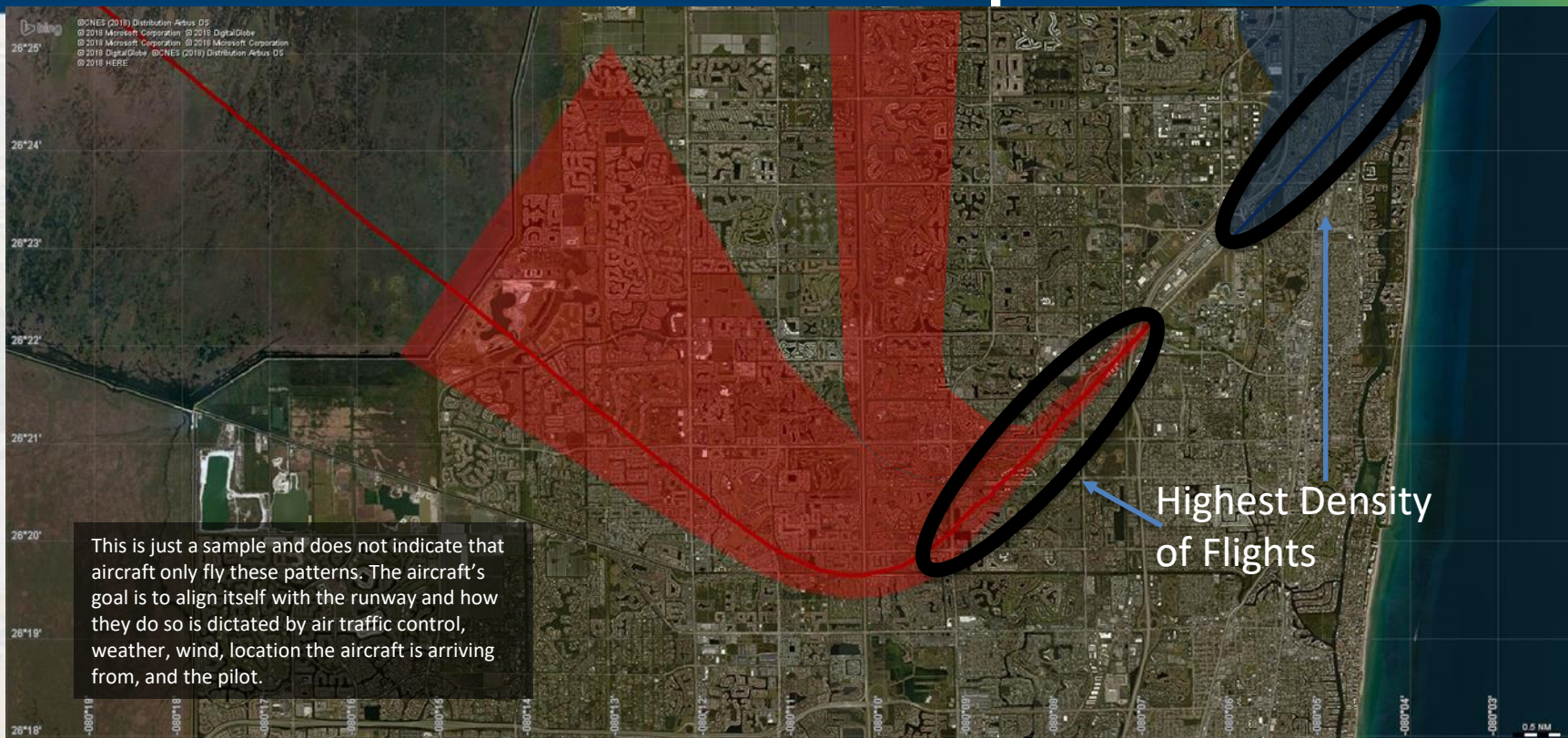
Runway Layout



Direction of aircraft take-offs and landings.

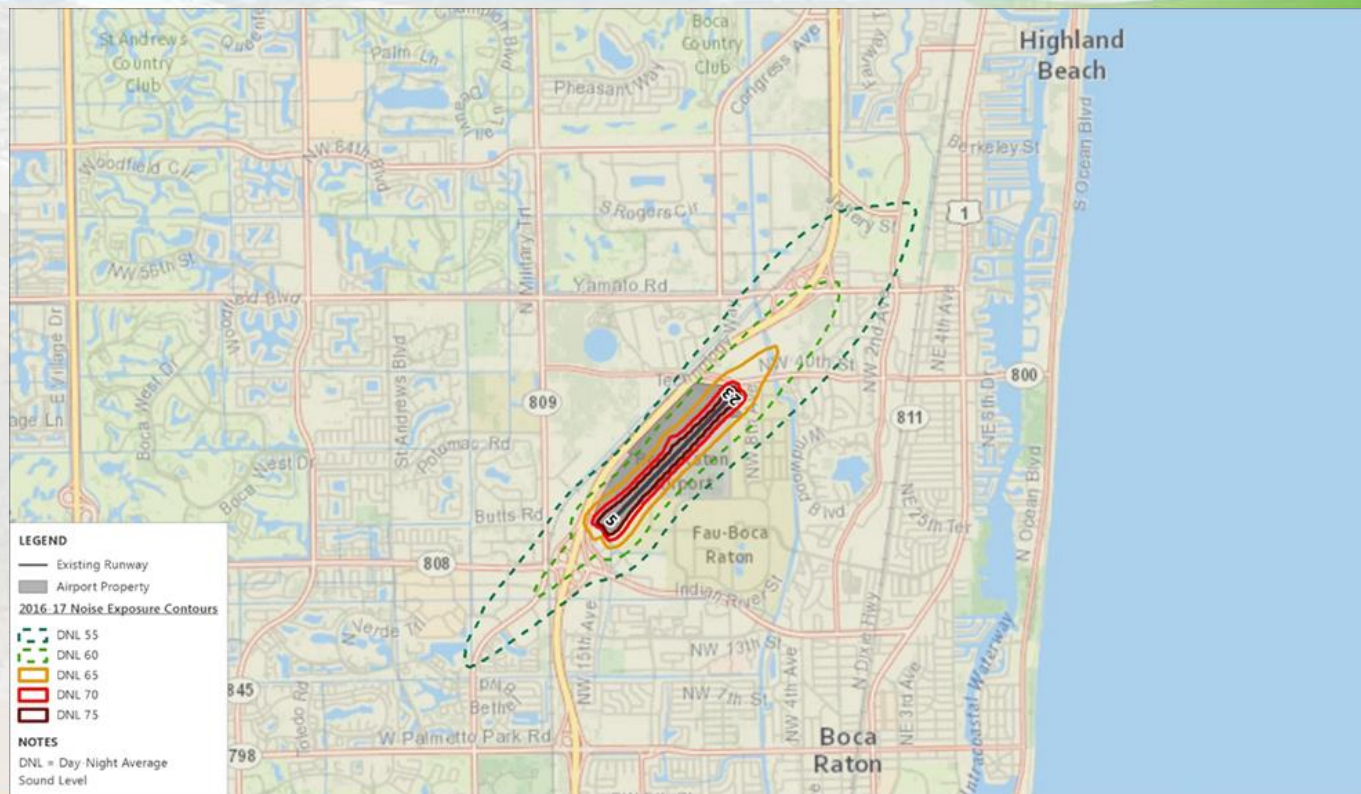
- The runway direction is dictated by the wind direction.
- Planes must fly into the wind to increase the performance of the airplane and for safety reasons.
- Wind direction might be different on the airport than in neighborhoods; airports have more open space.
- Flights departing to the northeast, and arriving from the southwest (Runway 5 operations) are the most common.
 - Runway 5 operations account for 75% of

Common RWY 5 Operations



Noise Contours

- This map depicts the average day-night sound levels caused from aircraft.



PublicVue

For information on exact flight tracks, altitudes, and noise monitors, use our public flight tracker. You can view live and historical data to help make the best choice possible.

Symphony PublicVue

Home Complaint Flight Tracking Contact Us

Details Tools Replay My Flights

Help About Options

Toolbar

Create Complaint

Weather Display

Find Address

Street

City State Zip Code

AA

Locate

Playback Controls

Current time: 03/29/2018 06:46:18

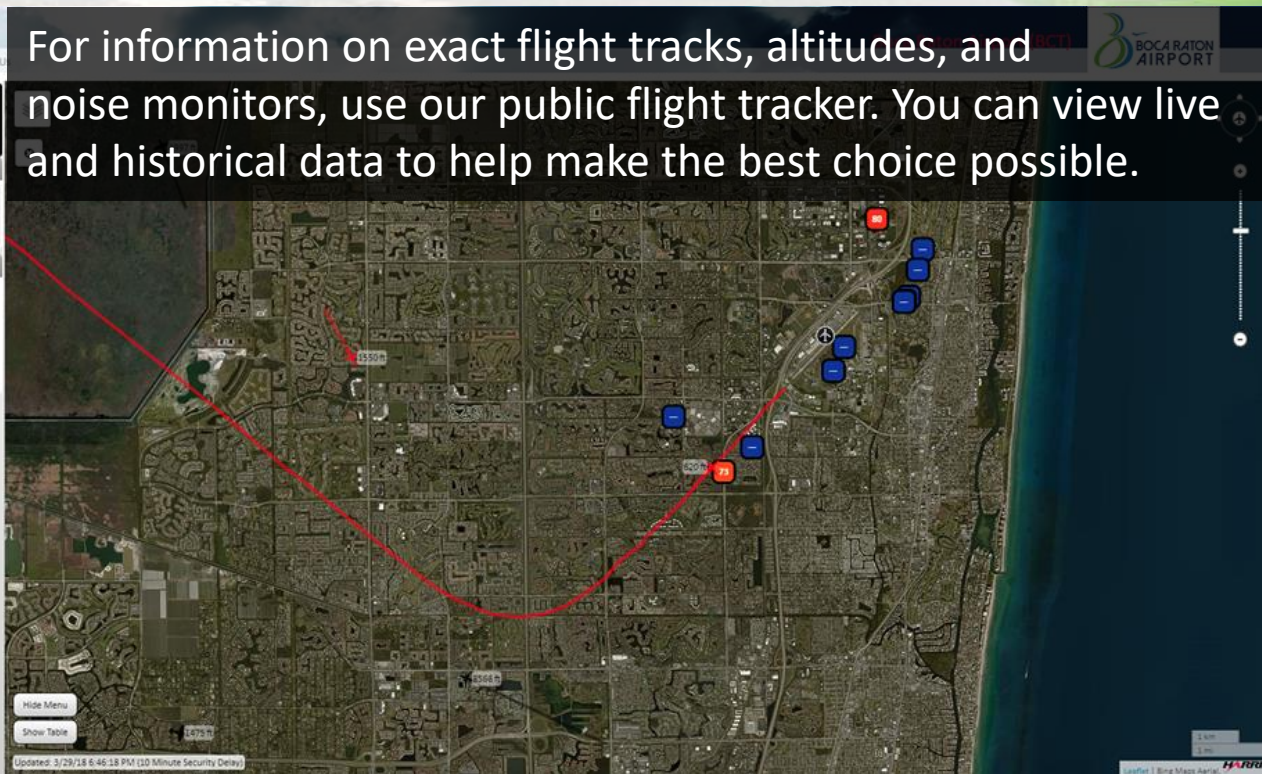
Replay speed: 1x

⏮ ⏪ ⏩ ⏭

Hide Menu

Show Table

Updated: 3/29/18 6:46:18 PM (10 Minute Security Delay)



Home Buying Tips

- Visit the home multiple times, on different days, at different times - This will increase your chances at experiencing aircraft flights overhead to see what impact it would have on daily life.
- Visit the inside as well as the outside of the house during these visits.
- Make sure the realtor doesn't persuade you to visit during off-peak times or just times that are convenient to the realtor.
- Be specific and be sure to ask your realtor, the neighbors, and the current owner if possible, about aircraft [noise](#). Also inquire about any existing complaints or easements attached to the house deed. Read the easement so you are aware of noise complaint procedures.