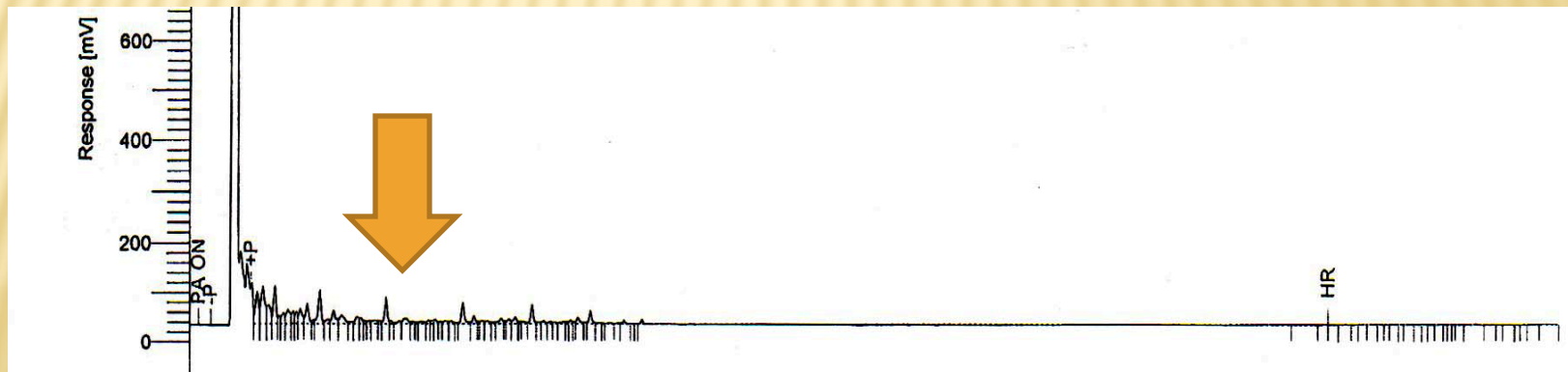


TEST RESULTS: NO PRESENCE OF JET FUEL

Via Verde Test Sample



Jet Fuel "Signature"



SAMPLING RESULTS

“The molds found are the product of tropical climate and generally occur where fallen vegetation accumulates and degrades.”

	Home 1	Home 2	Quad-plex	Home 3
Fungal Mold Type				
<i>Stemphylium</i>	Moderate	Trace		
<i>Rhizopus/Mucor</i>	Moderate	Heavy	Trace	Trace
<i>Baltrania</i>			Small/Limited	
<i>Cladosorium</i>				Trace

AIRCRAFT SOOT VS. SOOT MOLD



Staining on Roof Installed in 2007

AIRCRAFT SOOT VS. SOOT MOLD



Twelve (12) Vehicles in one (1) Photo, I-95 and Airport Road just west of Boca Raton Airport



Twenty Six (26) Vehicles in one (1) Photo, I-95 and Airport Road just West of Boca Raton Airport.
Also Dual Railroad Tracks



AIRCRAFT SOOT VS. SOOT MOLD

3 - 4
Aircraft
Engine Soot
Complaints

Boca Raton
Airport

2000



Boca Raton Airport, I-95, Tri-Rail Railroad, Yamato Rd., Glades Road, FAU Campus, US Hwy 1 and Surrounding Community

AIRCRAFT SOOT VS. SOOT MOLD



Greenhouse
Whitefly



Aphid



Scale



Mealybug

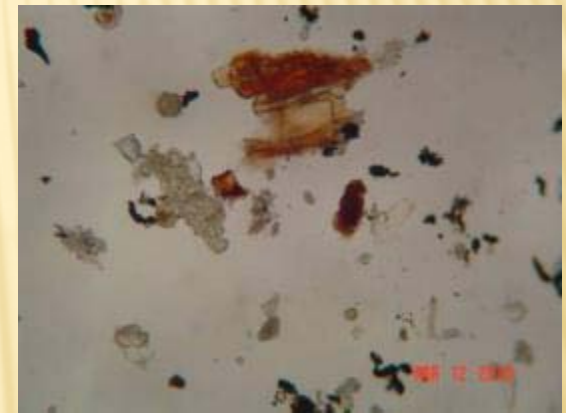
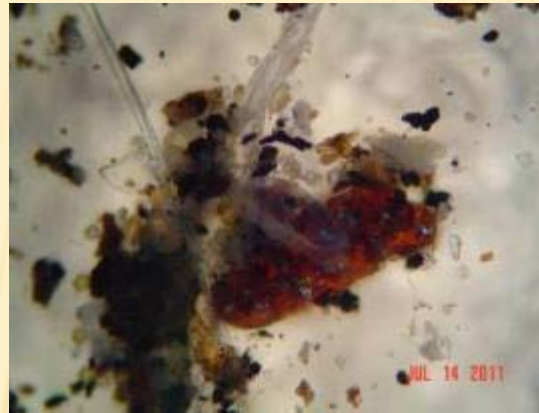
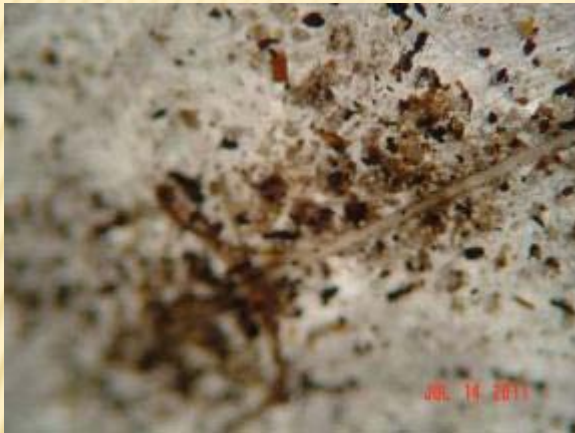
Fire Bush Tree Over Stained Patio Pavers & Roofing Tiles
Insect Pests: Scale, Aphids, Mealybugs

MICROSCOPIC EVALUATION OF ENVIRONMENTAL POLLUTANTS

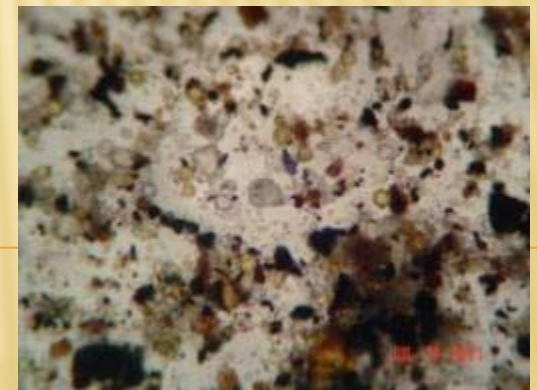
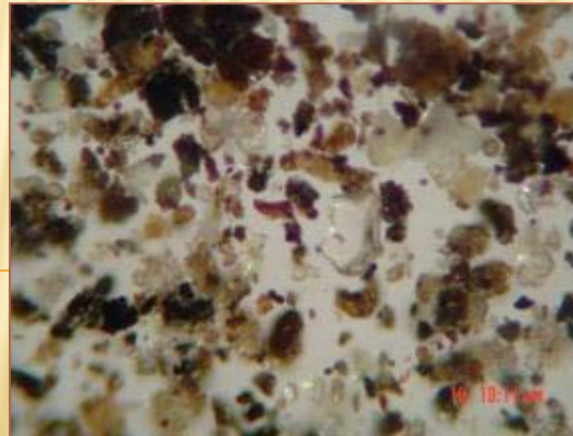
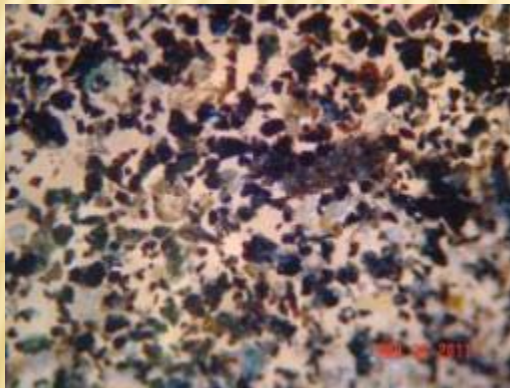
RANDALL B. MILLER, REHP
ENVIRONMENTAL SUPERVISOR II

AUGUST 17, 2011
PBCHD, EPH, AIR & SOLID WASTE SECTION

Cellulose Dust – vegetative dust particles.



Agricultural Soils – vegetative, carbonaceous, sand and mineral particles.



Terminology Defined

MICROSCOPIC EVALUATION OF ENVIRONMENTAL POLLUTANTS

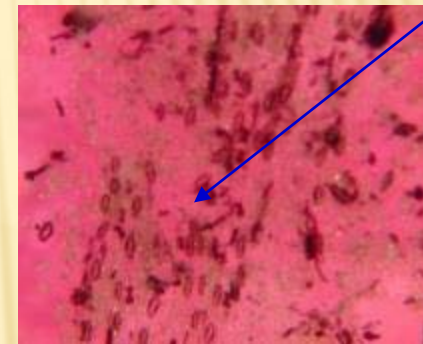
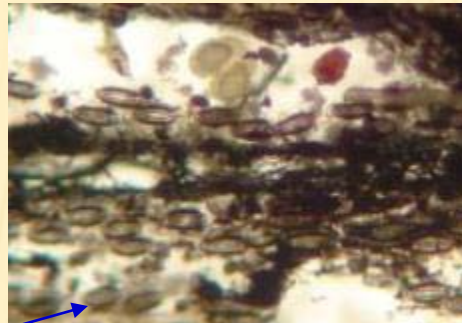
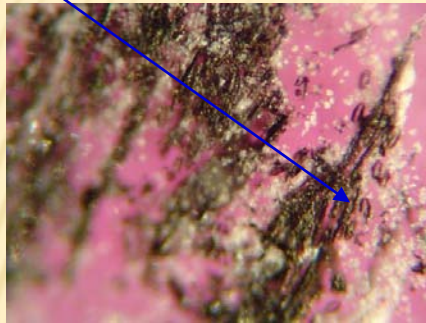
RANDALL B. MILLER, REHP
ENVIRONMENTAL SUPERVISOR II

AUGUST 17, 2011
PBCHD, EPH, AIR & SOLID WASTE SECTION

Stomata

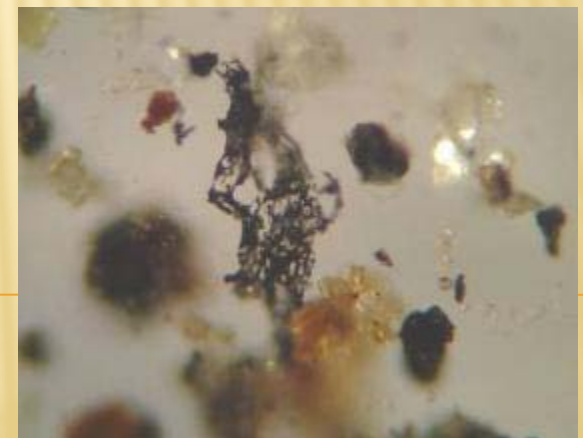
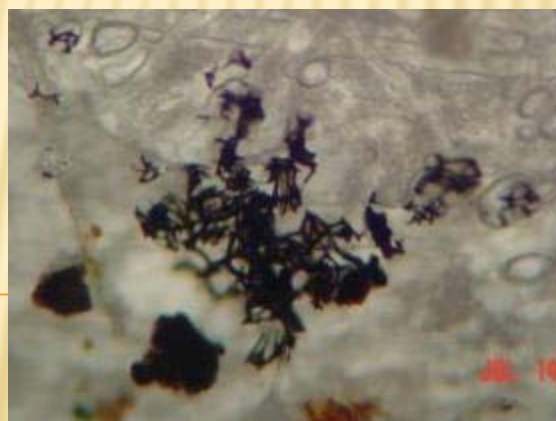
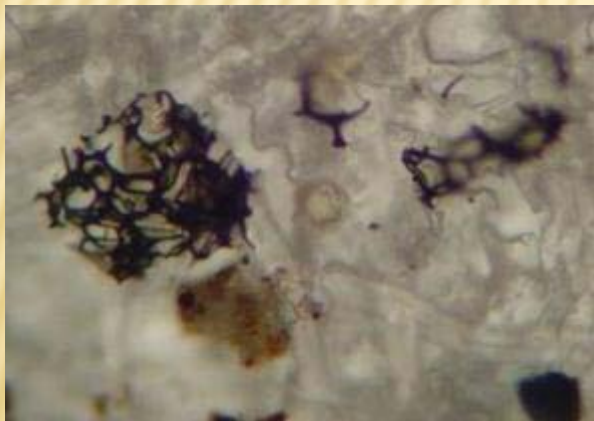
Sugar Cane Ash –very distinctive vegetative ash; “stomat” and cell structures.

Stomata



Stomata

Boiler Soot – dust particles that are black in color and appear “skeletal” in shape.



Terminology Defined

MICROSCOPIC EVALUATION OF ENVIRONMENTAL POLLUTANTS

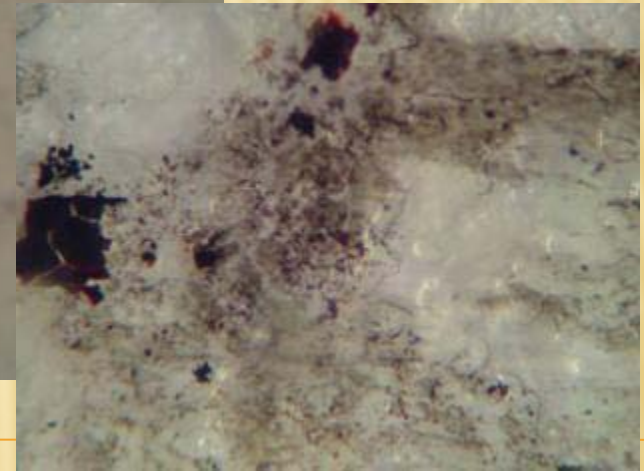
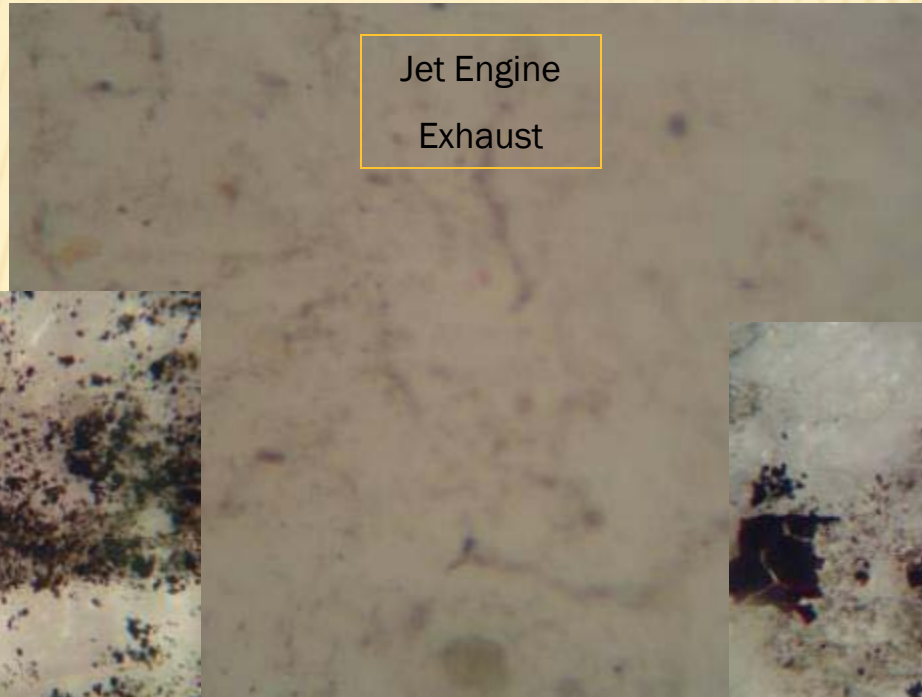
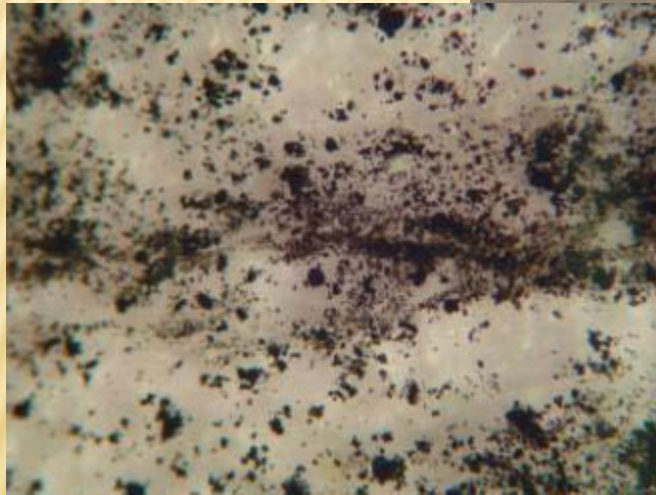
RANDALL B. MILLER, REHP
ENVIRONMENTAL SUPERVISOR II

AUGUST 17, 2011
PBCHD, EPH, AIR & SOLID WASTE SECTION

Truck Diesel
Exhaust

Jet Engine
Exhaust

Automobile
Exhaust



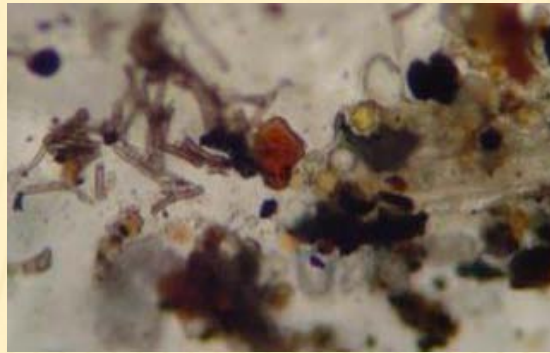
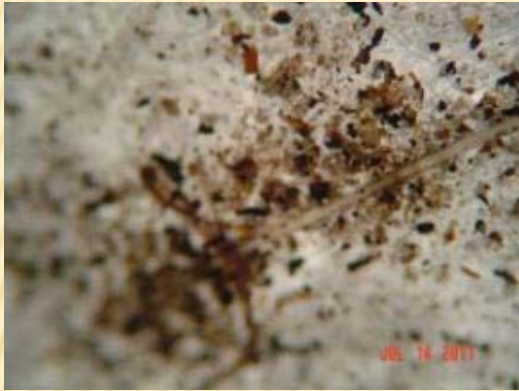
Carbonaceous Exhaust Soots

Terminology Defined

MICROSCOPIC EVALUATION OF ENVIRONMENTAL POLLUTANTS

RANDALL B. MILLER, REHP
ENVIRONMENTAL SUPERVISOR II

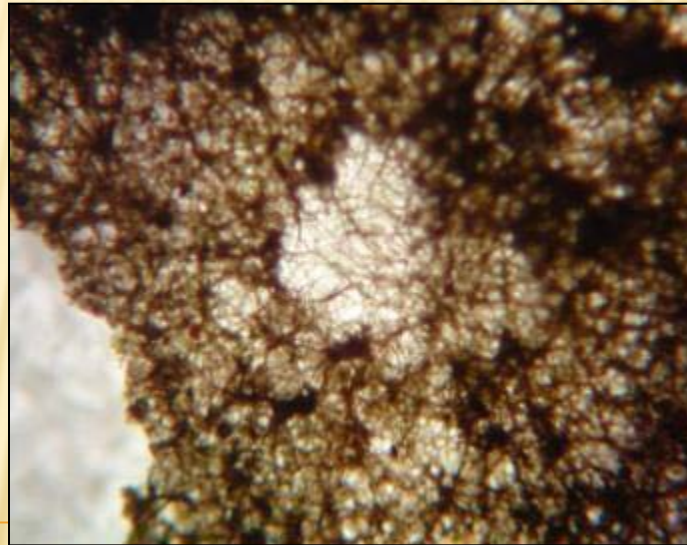
MARCH 6, 2013
PBCHD, EPH, AIR & SOLID WASTE SECTION



Soot Mold – active growth mycelia; spores are poorly defined; a lot of “fine carbonaceous” dust (*carbonaceous resin agglomerates*) surrounded by apparent cellulose dust.



Whitefly Colonization of Under-side of Leaf (Eggs & Larvae)



Active Growth Soot Mold – this mycelial fiber mat grew so heavily on a citrus leaf that it retained the leaf's shape when it fell off.



Whitefly Insects



Whitefly and Soot Mold Colonization of Black Olive Shade Tree.



Whitefly Larvae

Terminology Defined