



- TFR List
- TFR Map
- Map Airports
- TFR Help
- PilotWeb

SUA

NOTAM

Number : **FDC 7/2646** Download shapefiles
Issue Date : February 08, 2017 at 2016 UTC
Location : Palm Beach, Florida
Beginning Date and Time : February 10, 2017 at 2215 UTC
Ending Date and Time : February 13, 2017 at 0300 UTC
Reason for NOTAM : Temporary flight restrictions for VIP Movement
Type : VIP
Replaced NOTAM(s) : N/A

Jump To: [Affected Areas](#)
[Operating Restrictions and Requirements](#)
[Other Information](#)

Affected Area(s)

Area A

Airspace Definition:

Center: On the PALM BEACH VORTAC (PBI) 094 degree radial at 1.6 nautical miles. (Latitude: 26°40'47"N, Longitude: 80°03'27"W)

Radius: 30 nautical miles

Altitude: From the surface up to and including 17999 feet MSL

Excluding

On the PALM BEACH VORTAC (PBI) 349 degree radial at 30.9 nautical miles. (Latitude: 27°10'54"N, Longitude: 80°13'17"W)

Center: 2 nautical miles

Altitude: From the surface up to and including 17999 feet MSL

Excluding

On the FORT LAUDERDALE VOR/DME (FLL) 004 degree radial at 7.4 nautical miles. (Latitude: 26°11'50"N, Longitude: 80°10'14"W)

Center: 2 nautical miles

Altitude: From the surface up to and including 17999 feet MSL

Effective Date(s):

From February 10, 2017 at 2215 UTC (February 10, 2017 at 1715 EST)

To February 13, 2017 at 0300 UTC (February 12, 2017 at 2200 EST)

Area B

Airspace Definition:

Center: On the PALM BEACH VORTAC (PBI) 094 degree radial at 1.6 nautical miles. (Latitude: 26°40'47"N, Longitude: 80°03'27"W)

Radius: 10 nautical miles

Altitude: From the surface up to and including 17999 feet MSL

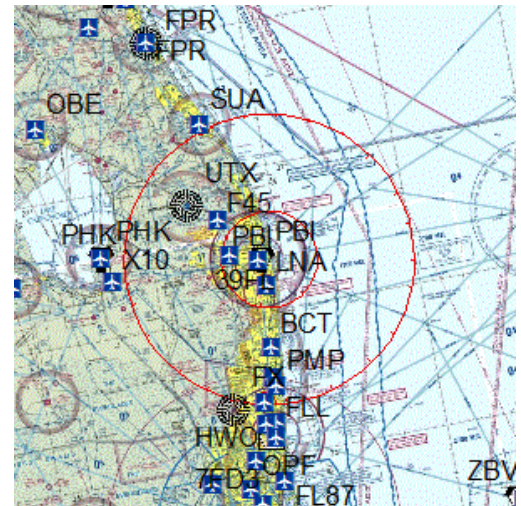
Effective Date(s):

From February 10, 2017 at 2215 UTC (February 10, 2017 at 1715 EST)

To February 13, 2017 at 0300 UTC (February 12, 2017 at 2200 EST)

Operating Restrictions and Requirements

No pilots may operate an aircraft in the areas covered by this NOTAM (except as described).



Top

- [Click for Sectional](#)
- [NOTAM Text](#)

Top

Except as specified below and/or unless authorized by ATC in consultation with the air traffic security coordinator via the domestic events network (DEN):

A. All aircraft operations within the 10 NMR area(s) listed above, known as the inner core(s), are prohibited except for: Approved law enforcement, military aircraft directly supporting the United States Secret Service (USSS) and the office of the President of the United States, approved air ambulance flights, and regularly scheduled commercial passenger and all-cargo carriers operating under one of the following TSA-Approved standard security programs/procedures: aircraft operator standard security program (AOSSP), full all-cargo aircraft operator standard security program (FACAOSSP), model security program (MSP), twelve five standard security program (TFSSP) all cargo, or all-cargo international security procedure (ACISP) and are arriving into and/or departing from 14 cfr part 139 airports. All emergency/life saving flight (medical/law enforcement/firefighting) operations must coordinate with ATC prior to their departure at 561-684-9047 to avoid potential delays.

B. For operations within the airspace between the 10 nmr and 30 nmr area(s) listed above, known as the outer ring(s): All aircraft operating within the outer ring(s) listed above are limited to aircraft arriving or departing local airfields, and workload permitting, ATC may authorize transit operations. Aircraft may not loiter. All aircraft must be on an active IFR or VFR flight plan with a discrete code assigned by an air traffic control (ATC) facility. Aircraft must be squawking the discrete code prior to departure and at all times while in the TFR and must remain in two-way radio communications with ATC.

C. All flight operations not covered in paragraph A. within the 10 NMR area must be security screened by TSA at a gateway airport prior to arriving or departing Palm Beach International Airport (KPBI). Aircraft operators must register with the TSA for gateway screening no less than 24 hours prior to their scheduled departure time. Reservations for screening may begin on February 09, 2017 and last through the duration of the event by calling TSA at 561-616-9650.

D. Gateway airports have been created at Palm Beach International Airport (KPBI), Orlando International Airport (KMCO), Fort Lauderdale International Airport (KFLL), Dulles International Airport (KIAD), Teterboro Airport (KTEB), and Westchester CO. Airport (KHPN) by TSA to accommodate aircraft arriving or departing Palm Beach International Airport (KPBI).

E. TSA screening will not be available on FRIDAY 2/10/2017. TSA screening will be available from 1702111300 UTC (0800 local 02/11/17) to 1702112200 UTC (1700 local 02/11/17), and 1702121300 UTC (0800 local 02/12/17) to 1702122200 UTC (1700 local 02/12/17). Pilots, crew and passengers must provide valid government-issued photo identification to the TSA at the gateway airport. Gateway screening will include id verification and vetting of all pilots, crew and passengers, screening of persons and baggage, and inspection of the aircraft. No firearms on board aircraft will be authorized.

F. On departure from a gateway airport aircraft must maintain radio contact with ATC and continuously squawk an ATC-assigned discrete code. Intermediate stops while enroute are not authorized unless an emergency exists.

G. The following operations are not authorized within this TFR: flight training, practice instrument approaches, aerobatic flight, glider operations, seaplane operations, parachute operations, ultralight, hang gliding, balloon operations, agriculture/crop dusting, animal population control flight operations, banner towing operations, sightseeing operations, maintenance test flights, model aircraft operations, model rocketry, unmanned aircraft systems (UAS), and utility and pipeline survey operations.

H. FAA recommends that all aircraft operators check notams frequently for possible changes to this TFR prior to operations within this region.

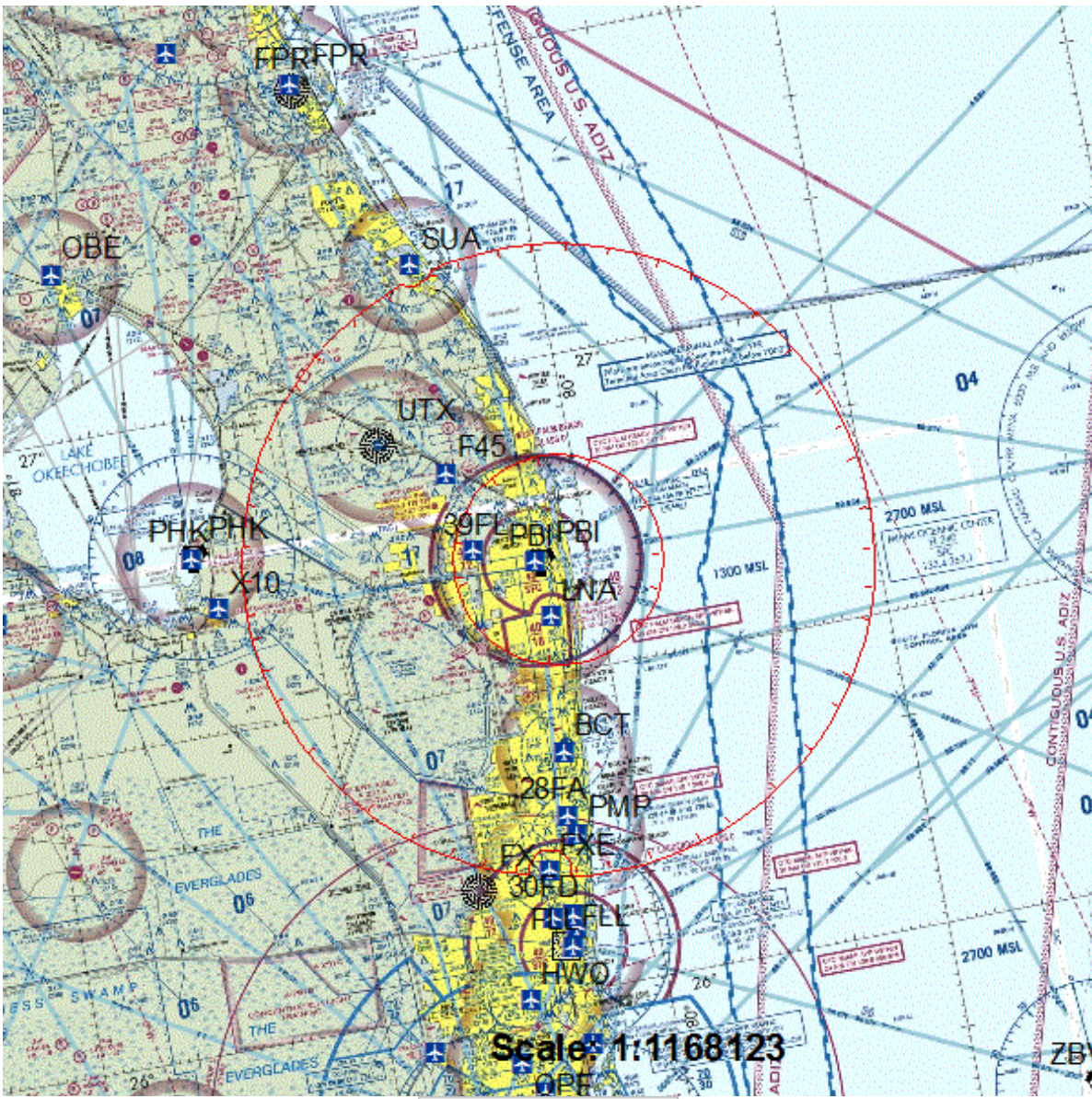
Other Information:

ARTCC: ZMA - Miami Center
Authority: Title 14 CFR section 91.141

[Top](#)

Depicted TFR data may not be a complete listing. Pilots should not use the information on this website for flight planning purposes. For the latest information, call your local Flight Service Station at 1-800-WX-BRIEF.

NOTAM : 7/2646 Location : Palm Beach, FL, Friday, February 10, 2017 through Sunday, February 12, 2017 Local



[Back to Details](#)

NOTAM : 7/2646

FDC 7/2646 ZMA PART 1 OF 7 FL..AIRSPACE PALM BEACH, FLORIDA..TEMPORARY FLIGHT RESTRICTIONS. FEBRUARY 10-12, 2017 LOCAL. PURSUANT TO 49 USC 40103(B), THE FEDERAL AVIATION ADMINISTRATION (FAA) CLASSIFIES THE AIRSPACE DEFINED IN THIS NOTAM AS 'NATIONAL DEFENSE AIRSPACE'. PILOTS WHO DO NOT ADHERE TO THE FOLLOWING PROCEDURES MAY BE INTERCEPTED, DETAINED AND INTERVIEWED BY LAW ENFORCEMENT/SECURITY PERSONNEL. ANY OF THE FOLLOWING ADDITIONAL ACTIONS MAY ALSO BE TAKEN AGAINST A PILOT WHO DOES NOT COMPLY WITH THE REQUIREMENTS OR ANY SPECIAL INSTRUCTIONS OR PROCEDURES ANNOUNCED IN THIS NOTAM: A) THE FAA MAY TAKE ADMINISTRATIVE ACTION, INCLUDING IMPOSING CIVIL PENALTIES AND THE SUSPENSION OR REVOCATION OF AIRMEN CERTIFICATES; OR B) THE UNITED STATES GOVERNMENT MAY PURSUE CRIMINAL CHARGES, INCLUDING CHARGES UNDER TITLE 49 OF THE UNITED STATES CODE, SECTION 46307; OR C) THE UNITED STATES GOVERNMENT MAY USE DEADLY FORCE AGAINST THE AIRBORNE AIRCRAFT, IF IT IS DETERMINED THAT THE AIRCRAFT POSES AN IMMINENT SECURITY THREAT. PURSUANT TO TITLE 14, SECTION 91.141 OF THE CODE OF FEDERAL 1702102215-1702130300 END PART 1 OF 7 FDC 7/2646 ZMA PART 2 OF 7 FL..AIRSPACE PALM BEACH, FLORIDA..TEMPORARY FLIGHT REGULATIONS, AIRCRAFT FLIGHT OPERATIONS ARE PROHIBITED WITHIN AN AREA DEFINED AS 30NM RADIUS OF 264047N0800327W (PBI094001.6) SFC-17999FT MSL; EXCLUDING AN AREA DEFINED AS 2NM RADIUS OF 271054N0801317W (PBI349030.9) SFC-17999FT MSL; EXCLUDING AN AREA DEFINED AS 2NM RADIUS OF 261150N0801014W (FLL004007.4) SFC-17999FT MSL EFFECTIVE 1702102215 UTC (1715 LOCAL 02/10/17) UNTIL 1702130300 UTC (2200 LOCAL 02/12/17). WITHIN AN AREA DEFINED AS 10NM RADIUS OF 264047N0800327W (PBI094001.6) SFC-17999FT MSL EFFECTIVE 1702102215 UTC (1715 LOCAL 02/10/17) UNTIL 1702130300 UTC (2200 LOCAL 02/12/17). EXCEPT AS SPECIFIED BELOW AND/OR UNLESS AUTHORIZED BY ATC IN CONSULTATION WITH THE AIR TRAFFIC SECURITY COORDINATOR VIA THE DOMESTIC EVENTS NETWORK (DEN): A. ALL AIRCRAFT OPERATIONS WITHIN THE 10 NMR 1702102215-1702130300 END PART 2 OF 7 FDC 7/2646 ZMA PART 3 OF 7 FL..AIRSPACE PALM BEACH, FLORIDA..TEMPORARY FLIGHT AREA(S) LISTED ABOVE, KNOWN AS THE INNER CORE(S), ARE PROHIBITED EXCEPT FOR: APPROVED LAW ENFORCEMENT, MILITARY AIRCRAFT DIRECTLY SUPPORTING THE UNITED STATES SECRET SERVICE (USSS) AND THE OFFICE OF THE PRESIDENT OF THE UNITED STATES, APPROVED AIR AMBULANCE FLIGHTS, AND REGULARLY SCHEDULED COMMERCIAL PASSENGER AND ALL-CARGO CARRIERS OPERATING UNDER ONE OF THE FOLLOWING TSA-APPROVED STANDARD SECURITY PROGRAMS/PROCEDURES: AIRCRAFT OPERATOR STANDARD SECURITY PROGRAM (AOSSP), FULL ALL-CARGO AIRCRAFT OPERATOR STANDARD SECURITY PROGRAM (FACAOSPP), MODEL SECURITY PROGRAM (MSP), TWELVE FIVE STANDARD SECURITY PROGRAM (TFSSP) ALL CARGO, OR ALL-CARGO INTERNATIONAL SECURITY PROCEDURE (ACISP) AND ARE ARRIVING INTO AND/OR DEPARTING FROM 14 CFR PART 139 AIRPORTS. ALL EMERGENCY/LIFE SAVING FLIGHT (MEDICAL/LAW ENFORCEMENT/FIREFIGHTING) OPERATIONS MUST COORDINATE WITH ATC PRIOR TO THEIR DEPARTURE 1702102215-1702130300 END PART 3 OF 7 FDC 7/2646 ZMA PART 4 OF 7 FL..AIRSPACE PALM BEACH, FLORIDA..TEMPORARY FLIGHT AT 561-684-9047 TO AVOID POTENTIAL DELAYS. B. FOR OPERATIONS WITHIN THE AIRSPACE BETWEEN THE 10 NMR AND 30 NMR AREA(S) LISTED ABOVE, KNOWN AS THE OUTER RING(S): ALL AIRCRAFT OPERATING WITHIN THE OUTER RING(S) LISTED ABOVE ARE LIMITED TO AIRCRAFT ARRIVING OR DEPARTING LOCAL AIRFIELDS, AND WORKLOAD PERMITTING, ATC MAY AUTHORIZE TRANSIT OPERATIONS. AIRCRAFT MAY NOT LOITER. ALL AIRCRAFT MUST BE ON AN ACTIVE IFR OR VFR FLIGHT PLAN WITH A DISCRETE CODE ASSIGNED BY AN AIR TRAFFIC CONTROL (ATC) FACILITY. AIRCRAFT MUST BE SQUAWKING THE DISCRETE CODE PRIOR TO DEPARTURE AND AT ALL TIMES WHILE IN THE TFR AND MUST REMAIN IN TWO-WAY RADIO COMMUNICATIONS WITH ATC. C. ALL FLIGHT OPERATIONS NOT COVERED IN PARAGRAPH A.

WITHIN THE 10 NMR AREA MUST BE SECURITY SCREENED BY TSA AT A GATEWAY AIRPORT PRIOR TO ARRIVING OR DEPARTING PALM BEACH INTERNATIONAL AIRPORT (KPBI). AIRCRAFT OPERATORS MUST REGISTER 1702102215-1702130300 END PART 4 OF 7 FDC 7/2646 ZMA PART 5 OF 7 FL..AIRSPACE PALM BEACH, FLORIDA..TEMPORARY FLIGHT WITH THE TSA FOR GATEWAY SCREENING NO LESS THAN 24 HOURS PRIOR TO THEIR SCHEDULED DEPARTURE TIME. RESERVATIONS FOR SCREENING MAY BEGIN ON FEBRUARY 09, 2017 AND LAST THROUGH THE DURATION OF THE EVENT BY CALLING TSA AT 561-616-9650. D. GATEWAY AIRPORTS HAVE BEEN CREATED AT PALM BEACH INTERNATIONAL AIRPORT (KPBI), ORLANDO INTERNATIONAL AIRPORT (KMCO), FORT LAUDERDALE INTERNATIONAL AIRPORT (KFLL), DULLES INTERNATIONAL AIRPORT (KIAD), TETERBORO AIRPORT (KTEB), AND WESTCHESTER CO. AIRPORT (KHPN) BY TSA TO ACCOMMODATE AIRCRAFT ARRIVING OR DEPARTING PALM BEACH INTERNATIONAL AIRPORT (KPBI). E. TSA SCREENING WILL NOT BE AVAILABLE ON FRIDAY 2/10/2017. TSA SCREENING WILL BE AVAILABLE FROM 1702111300 UTC (0800 LOCAL 02/11/17) TO 1702112200 UTC (1700 LOCAL 02/11/17), AND 1702121300 UTC (0800 LOCAL 02/12/17) TO 1702122200 UTC (1700 LOCAL 02/12/17). PILOTS, CREW AND 1702102215-1702130300 END PART 5 OF 7 FDC 7/2646 ZMA PART 6 OF 7 FL..AIRSPACE PALM BEACH, FLORIDA..TEMPORARY FLIGHT PASSENGERS MUST PROVIDE VALID GOVERNMENT-ISSUED PHOTO IDENTIFICATION TO THE TSA AT THE GATEWAY AIRPORT. GATEWAY SCREENING WILL INCLUDE ID VERIFICATION AND VETTING OF ALL PILOTS, CREW AND PASSENGERS, SCREENING OF PERSONS AND BAGGAGE, AND INSPECTION OF THE AIRCRAFT. NO FIREARMS ON BOARD AIRCRAFT WILL BE AUTHORIZED. F. ON DEPARTURE FROM A GATEWAY AIRPORT AIRCRAFT MUST MAINTAIN RADIO CONTACT WITH ATC AND CONTINUOUSLY SQUAWK AN ATC-ASSIGNED DISCRETE CODE. INTERMEDIATE STOPS WHILE ENROUTE ARE NOT AUTHORIZED UNLESS AN EMERGENCY EXISTS. G. THE FOLLOWING OPERATIONS ARE NOT AUTHORIZED WITHIN THIS TFR: FLIGHT TRAINING, PRACTICE INSTRUMENT APPROACHES, AEROBATIC FLIGHT, GLIDER OPERATIONS, SEAPLANE OPERATIONS, PARACHUTE OPERATIONS, ULTRALIGHT, HANG GLIDING, BALLOON OPERATIONS, AGRICULTURE/CROP DUSTING, ANIMAL POPULATION CONTROL FLIGHT OPERATIONS, BANNER 1702102215-1702130300 END PART 6 OF 7 FDC 7/2646 ZMA PART 7 OF 7 FL..AIRSPACE PALM BEACH, FLORIDA..TEMPORARY FLIGHT TOWING OPERATIONS, SIGHTSEEING OPERATIONS, MAINTENANCE TEST FLIGHTS, MODEL AIRCRAFT OPERATIONS, MODEL ROCKETRY, UNMANNED AIRCRAFT SYSTEMS (UAS), AND UTILITY AND PIPELINE SURVEY OPERATIONS. H. FAA RECOMMENDS THAT ALL AIRCRAFT OPERATORS CHECK NOTAMS FREQUENTLY FOR POSSIBLE CHANGES TO THIS TFR PRIOR TO OPERATIONS WITHIN THIS REGION. 1702102215-1702130300 END PART 7 OF 7